

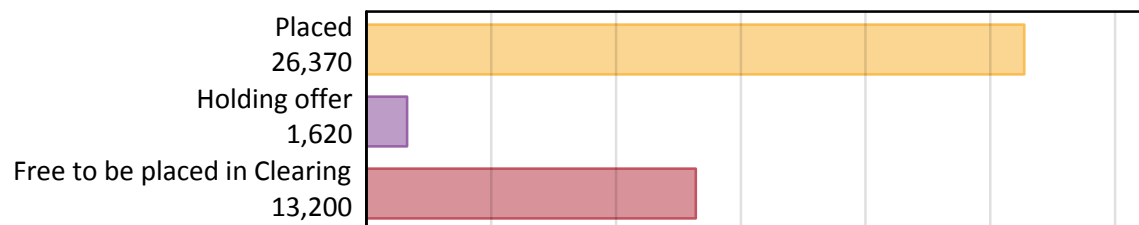
Daily Clearing Analysis: Overview

B7 Nursing analysis at 00:05 on Thursday 13 September 2018 (28 days after A level results day)

AB.1 Placed applicants to nursing from the UK, 2018 cycle

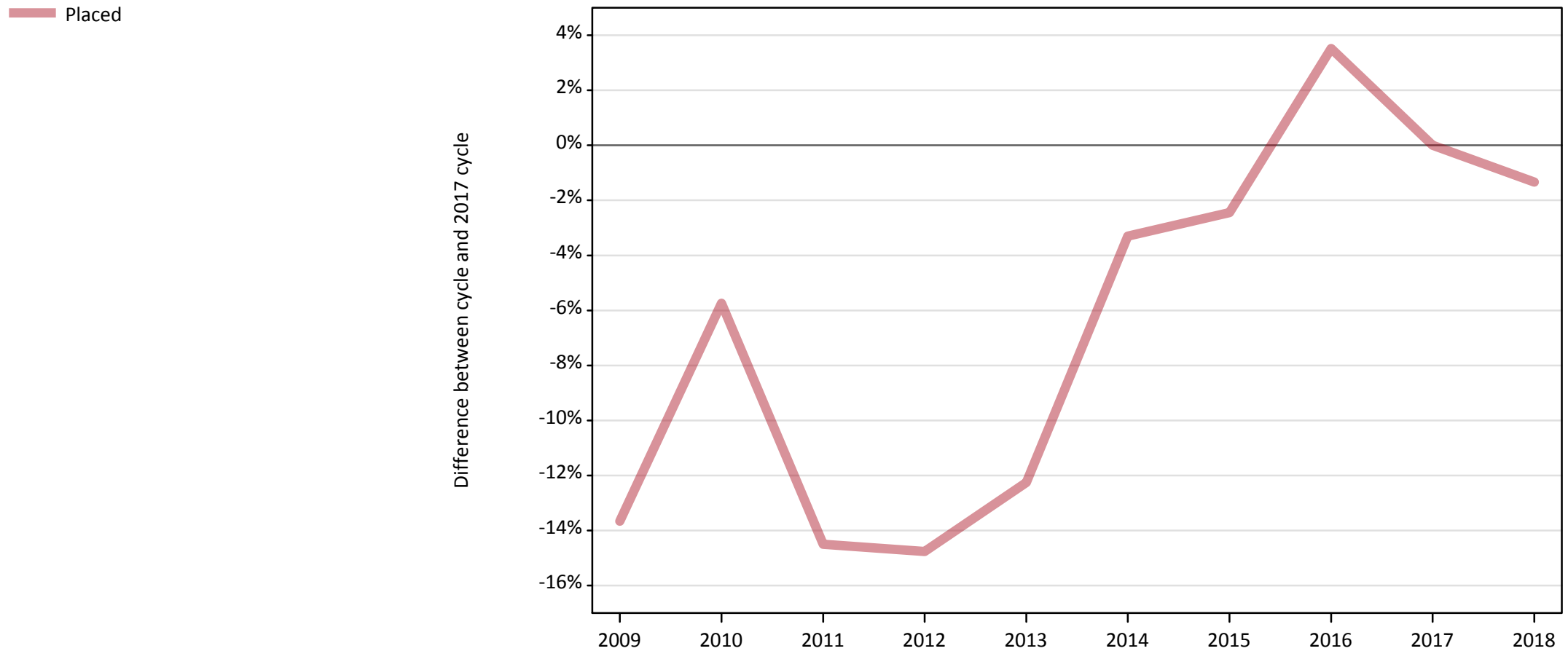
Applicant type	Status	2018
Main scheme	Placed (Clearing)	1,930
	Placed (Adjustment)	10
	Placed (Firm)	21,990
	Placed (Insurance)	540
	Placed (Other)	1,140
	Holding offer	1,620
	Free to be placed in Clearing	13,200
Direct to Clearing	Placed (Direct to Clearing)	770
	Other (Direct to Clearing)	340
All applicants	Placed	26,370

AB.2 Summary of nursing applicants who are placed, holding offers or free to be placed in Clearing (the UK)



AB.3 Placed applicants to nursing from the UK: 28 days after A level results day

Placed applicants to nursing: difference between cycle and 2017 cycle



Note: The percentage change is not plotted in the above chart for groups with fewer than 30 placed applicants in any one cycle.

AB.4 Placed applicants to nursing from the UK: 28 days after A level results day

Placed applicants to nursing: applicants at 28 days after A level results day

Applicant type	Status	2009	2010	2011	2012	2013	2014	2015	2016	2017	2018
All applicants	Placed	23,070	25,190	22,850	22,780	23,450	25,840	26,070	27,660	26,720	26,370

AB.5 Placed applicants to nursing from the UK: 28 days after A level results day

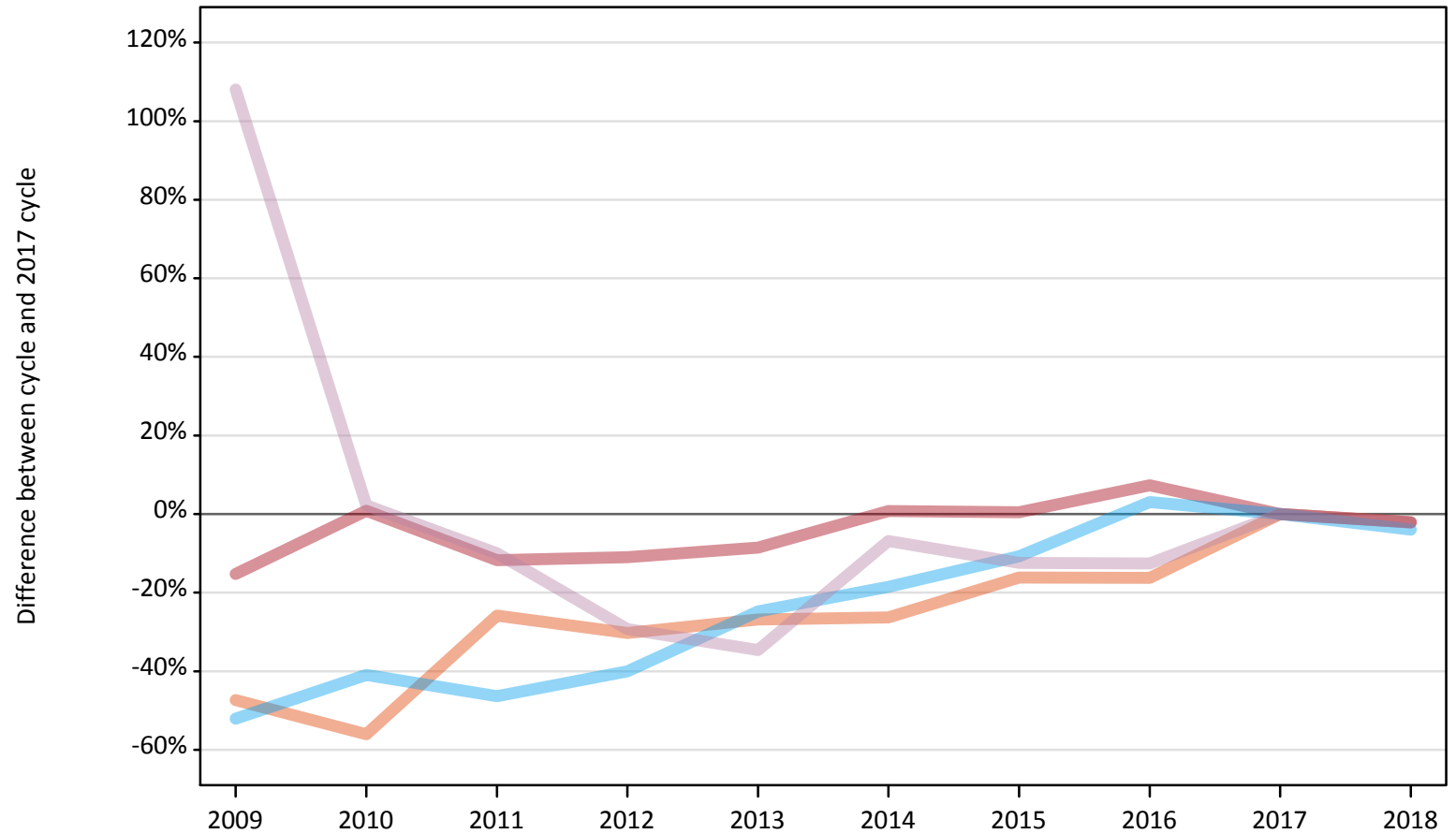
Placed applicants to nursing: difference between cycle and 2017 cycle

Applicant type	Status	2009	2010	2011	2012	2013	2014	2015	2016	2017	2018
All applicants	Placed	-14%	-6%	-14%	-15%	-12%	-3%	-2%	4%	0%	-1%

Note: The percentage change is not recorded in the above table for groups with fewer than 10 placed applicants in that cycle or in the 2017 cycle.

AB.6 Placed main scheme applicants to nursing from the UK: 28 days after A level results day
All Main scheme placed routes (excluding Adjustment): difference between cycle and 2017 cycle

- Placed (Clearing)
- Placed (Firm)
- Placed (Insurance)
- Placed (Other)



Note: The percentage change is not plotted in the above chart for groups with fewer than 30 placed applicants in any one cycle.

AB.7 Placed main scheme applicants to nursing from the UK: 28 days after A level results day

All Main scheme placed routes (excluding Adjustment): applicants at 28 days after A level results day

Applicant type	Status	2009	2010	2011	2012	2013	2014	2015	2016	2017	2018
Main scheme	Placed (Clearing)	1,040	870	1,460	1,380	1,440	1,450	1,650	1,650	1,970	1,930
	Placed (Firm)	19,040	22,650	19,830	20,000	20,540	22,640	22,570	24,110	22,470	21,990
	Placed (Insurance)	270	330	300	330	420	450	500	570	560	540
	Placed (Other)	2,420	1,190	1,050	820	760	1,080	1,020	1,020	1,160	1,140

AB.8 Placed main scheme applicants to nursing from the UK: 28 days after A level results day

All Main scheme placed routes (excluding Adjustment): difference between cycle and 2017 cycle

Applicant type	Status	2009	2010	2011	2012	2013	2014	2015	2016	2017	2018
Main scheme	Placed (Clearing)	-47%	-56%	-26%	-30%	-27%	-26%	-16%	-16%	0%	-2%
	Placed (Firm)	-15%	1%	-12%	-11%	-9%	1%	0%	7%	0%	-2%
	Placed (Insurance)	-52%	-41%	-46%	-40%	-25%	-18%	-11%	3%	0%	-4%
	Placed (Other)	108%	2%	-10%	-29%	-35%	-7%	-12%	-13%	0%	-2%

Note: The percentage change is not recorded in the above table for groups with fewer than 10 placed applicants in that cycle or in the 2017 cycle.

AB.9 Main scheme applicants placed to nursing through adjustment: 28 days after A level results day

Placed through adjustment: difference between cycle and 2017 cycle

[This chart is not part of this report]

AB.10 Main scheme applicants placed to nursing through adjustment: 28 days after A level results day

Placed through adjustment: applicants at 28 days after A level results day

Applicant type	Status	2009	2010	2011	2012	2013	2014	2015	2016	2017	2018
Main scheme	Placed (Adjustment)	0	0	0	0	10	10	10	0	20	10

AB.11 Main scheme applicants placed to nursing through adjustment: 28 days after A level results day

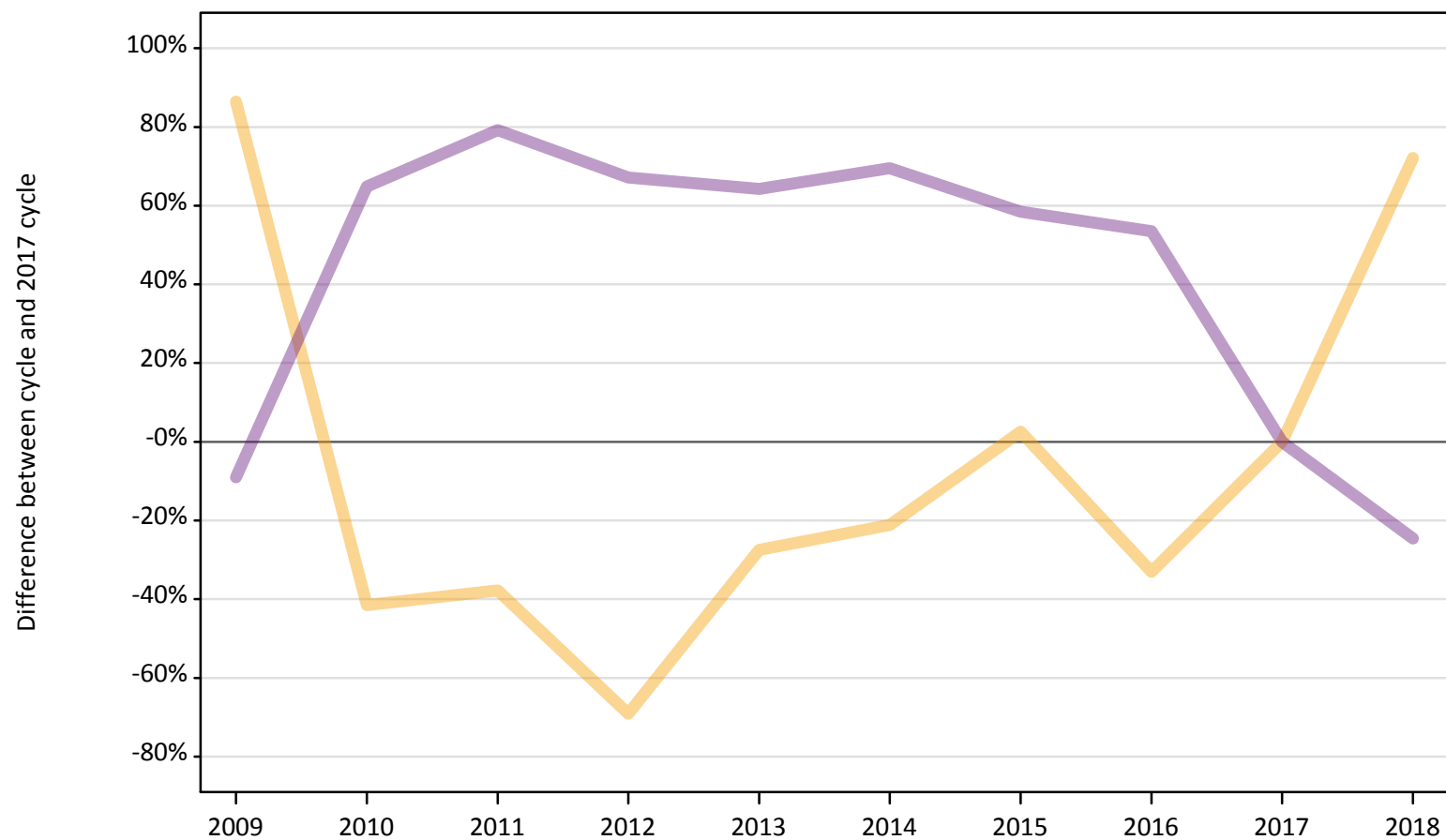
Placed through adjustment: difference between cycle and 2017 cycle

[This table is not part of this report]

AB.12 Main scheme applicants to nursing not currently placed from the UK: 28 days after A level results day

Applicants in unplaced states: difference between cycle and 2017 cycle

— Holding offer
— Free to be placed in Clearing



Note: The percentage change is not plotted in the above chart for groups with fewer than 30 unplaced applicants in any one cycle.

AB.13 Main scheme applicants to nursing not currently placed from the UK: 28 days after A level results day

Applicants in unplaced states: applicants at 28 days after A level results day

Applicant type	Status	2009	2010	2011	2012	2013	2014	2015	2016	2017	2018
Main scheme	Holding offer	1,760	550	590	290	680	740	970	630	940	1,620
	Free to be placed in Clearing	15,920	28,860	31,360	29,260	28,740	29,670	27,730	26,870	17,500	13,200

AB.14 Main scheme applicants to nursing not currently placed from the UK: 28 days after A level results day

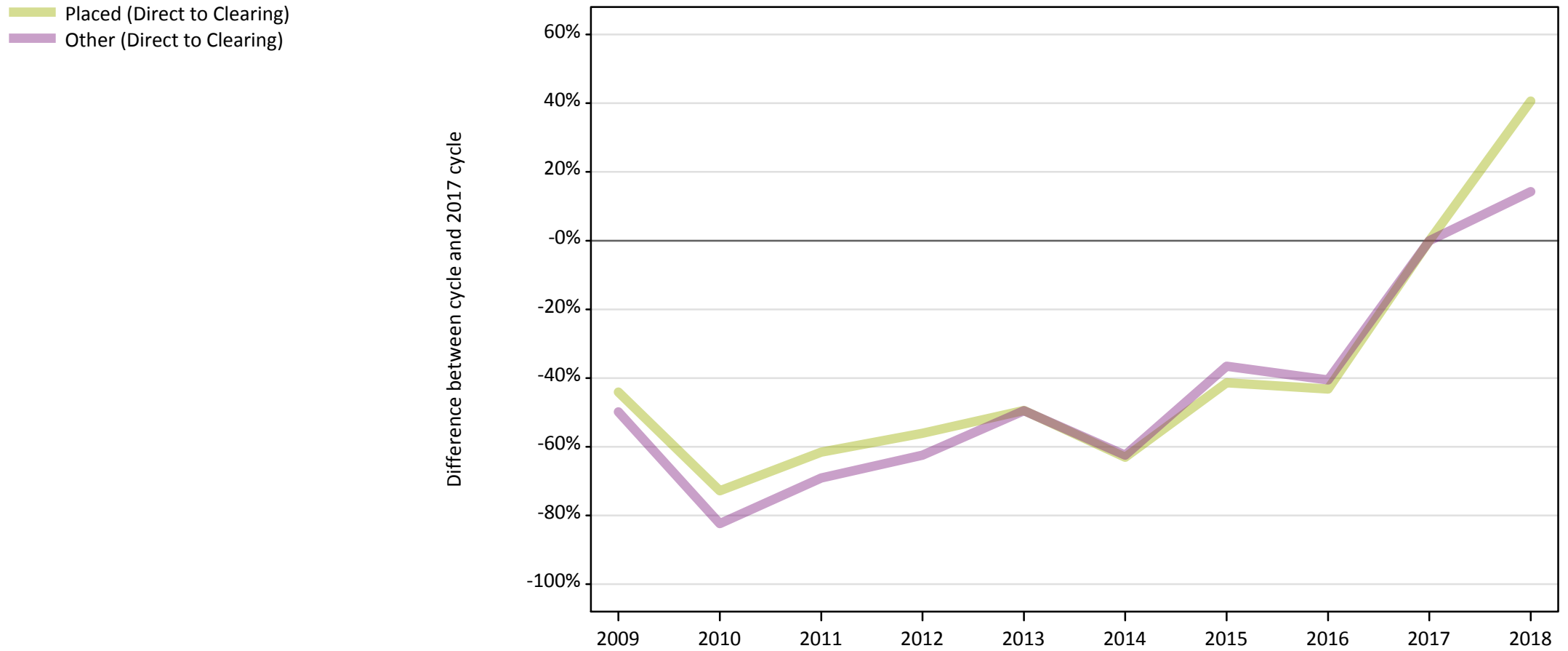
Applicants in unplaced states: difference between cycle and 2017 cycle

Applicant type	Status	2009	2010	2011	2012	2013	2014	2015	2016	2017	2018
Main scheme	Holding offer	86%	-42%	-38%	-69%	-27%	-21%	3%	-33%	0%	72%
	Free to be placed in Clearing	-9%	65%	79%	67%	64%	70%	58%	54%	0%	-25%

Note: The percentage change is not recorded in the above table for groups with fewer than 10 unplaced applicants in that cycle or in the 2017 cycle.

AB.15 Direct to Clearing applicants from the UK: 28 days after A level results day

Direct to Clearing: difference between cycle and 2017 cycle



Note: The percentage change is not plotted in the above chart for groups with fewer than 30 placed applicants in any one cycle.

AB.16 Direct to Clearing applicants from the UK: 28 days after A level results day

Direct to Clearing 28 days after A level results day

Applicant type	Status	2009	2010	2011	2012	2013	2014	2015	2016	2017	2018
Direct to Clearing	Placed (Direct to Clearing)	300	150	210	240	280	200	320	310	540	770
	Other (Direct to Clearing)	150	50	90	110	150	110	190	180	300	340

AB.17 Direct to Clearing applicants from the UK: 28 days after A level results day

Direct to Clearing: difference between cycle and 2017 cycle

Applicant type	Status	2009	2010	2011	2012	2013	2014	2015	2016	2017	2018
Direct to Clearing	Placed (Direct to Clearing)	-44%	-73%	-62%	-56%	-49%	-63%	-41%	-43%	0%	41%
	Other (Direct to Clearing)	-50%	-82%	-69%	-62%	-50%	-62%	-37%	-41%	0%	14%

Note: The percentage change is not recorded in the above table for groups with fewer than 10 placed applicants in that cycle or in the 2017 cycle.